

# TECHNIQUES of DISCO

**D**  **S** **C** 

Rev.2

## TECHNICAL DATA

BALLAD2			14	16	18	20	22	24
CELLS	NUMBER		60					
	CLOSED		8					
FLAT	ASPECT RATIO		5.6					
	AREA	m <sup>2</sup>	14.0	16.0	18.0	20.0	22.0	24.0
	SPAN	m	8.9	9.5	10.0	10.6	11.1	11.6
PROJECTED	AREA	m <sup>2</sup>	11.8	13.5	15.2	16.9	18.6	20.2
	SPAN	m	7.0	7.4	7.9	8.3	8.7	9.1
	ASPECT RATIO		4.1					
FLATTENING		%	15.7%					
CHORD	MAX	m	1.92	2.06	2.18	2.30	2.41	2.52
	AVER	m	1.58	1.69	1.79	1.89	1.98	2.07
LINES	HEIGHT	m	5.31	5.68	6.02	6.35	6.66	6.96
	MAIN		3/4/3/3					
RISERS	NUMBER	3	A+A'/B/C/D					
	TRIMS		YES (130mm)					
	ACCELERATOR		YES (140mm)					
PILOT WEIGHT (PARAMOTOR)	MIN-MAX	KG	55-120	55-130	65-140	75-150	85-160	90-168
CERTIFICATION	8G EN926-1	KG	Certified					
	5.25G DGAC	KG	Certified					
GLIDER WEIGHT		KG	3.50	3.65	3.85	4.10	4.35	4.60

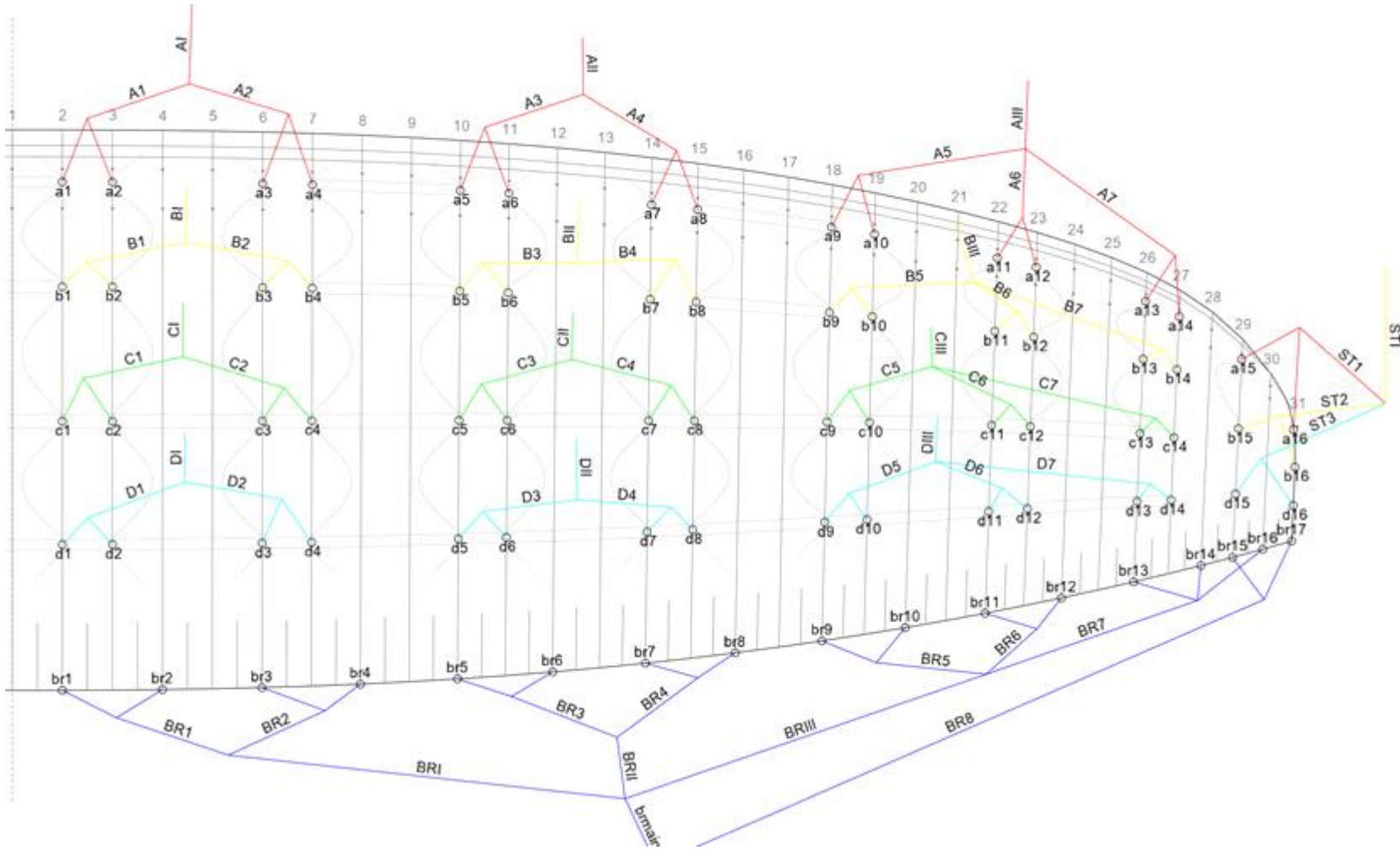
## MATERIALS DATA

CANOPY	FABRIC CODE	SUPPLIER
UPPER SURFACE	MJ40/32 MF	Myeongjin
BOTTOM SURFACE	MJ32 MF	Myeongjin
PROFILES	MJ38/32 HF	Myeongjin
DIAGONALS	MJ38 HF	Myeongjin
LOOPS	12.5mm Nylon	SUN
REINFORCEMENT LOOPS	DACRON(SR100)	Myeongjin
TRAILING EDGE REINFORCEMENT	SR Laminated	NCV INDUSTRIES
RIB REINFORCEMENT	40D STICKY	Myeongjin
THREAD	150D/3, 210D/3	COATS THREAD

SUSPENSION LINES	FABRIC CODE	SUPPLIER
UPPER CASCADES	8000U-90/70	EDELRID
MIDDLE CASCADES	8000U-130/90	EDELRID
MAIN	8000U-230/190 /130	EDELRID
MAIN STABLE	PPSL 120	LIROS
UPPER BRAKE	8000U-50	EDELRID
MIDDLE BRAKE	8000U-70	EDELRID
MAIN BREAK	10N-200	EDELRID
THREAD	150D/3, 210D/3	COATS THREAD

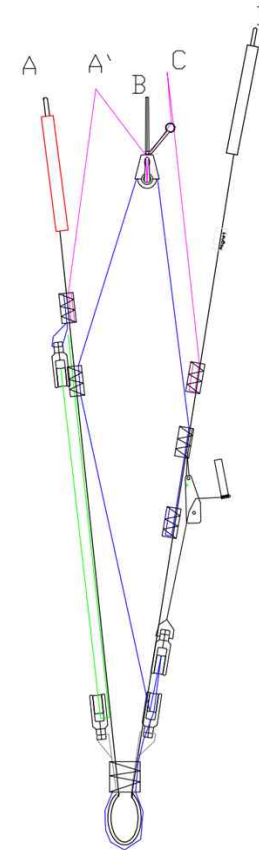
RISERS	FABRIC CODE	SUPPLIER
MATERIAL	WEBBING 12MM	GUTH&WOLF GMBH
THREAD	210D/3, 420D/3	COATS THREAD
PULLEYS	Ronstan 20	Ronstan

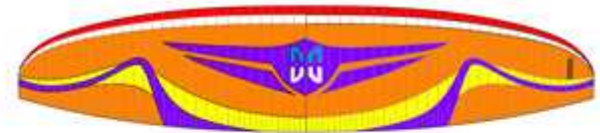
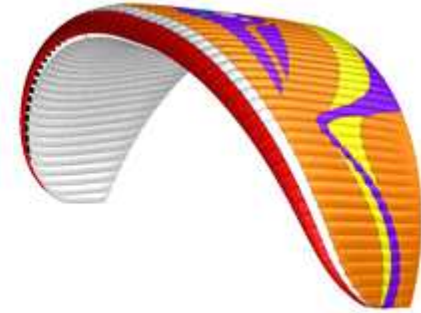
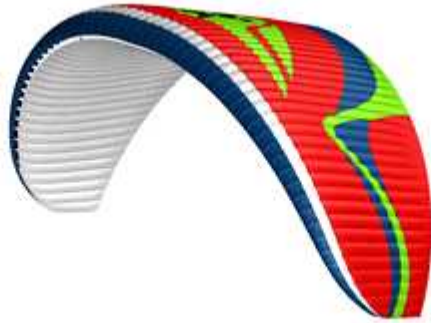
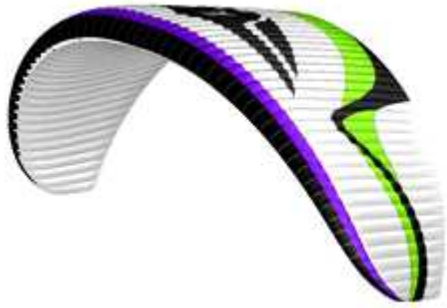
# SUSPENSION PLAN



SCHEMATIC RISERS

	Non Accelerated [mm]	Accelerated [mm]	Trim [mm]
A	500	360	500
B	500	430	530
C	500	465	565
D	500	500	630





TIGER

RED

ORANGE